

# THE DRAWING ROOM

EMILY GOLDSTEIN & VICTORIA MUNROE

## WINTER SALON Installation View 2



BRYAN HUNT  
*Deep Field with Quarry*, 2015  
oil, acrylic, charcoal, photograph on canvas  
34 3/8 x 28 3/4 inches  
signed and dated lower right  
(BH7557)



BRYAN HUNT  
*Oceanus*, 2013  
cast Aqua-Resin, metallic paint  
16 1/2 x 12 1/4 x 2 inches  
unique  
signed verso  
(BH7583)



DAN RIZZIE  
*Nizamuddin*, 2015  
lithograph, relief, collage, chine collé  
38 x 30 inches  
41 x 32 3/8 inches framed  
Ed. 29/30  
numbered lower left; signed, dated lower  
right  
(DR7555.29)



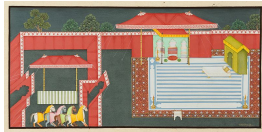
SHARON HORVATH  
*Bubble Up (Indian Summer)*, 2015  
ink, pigment, polymer on paper  
27 x 10 inches  
signed verso  
(SH7750)



SHARON HORVATH  
*Cheer Up (Bubble Up Series)*, 2015  
pigment, polymer, ink on paper  
27 x 9 inches  
signed verso  
(SH7751)



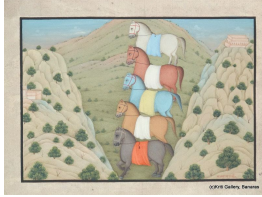
SHARON HORVATH  
*Bubble Up (Red Drop)*, 2015  
ink, pigment, polymer on paper  
25 1/4 x 8 1/4 inches  
signed verso  
(SH7752)



RAJA RAM SHARMA  
*Ego*, 2014  
hand ground mineral pigments with gum  
arabic on paper  
7 x 12 3/8 inches paper  
signed lower right  
(RR7317)



RAJA RAM SHARMA  
*Urbanization V*, 2015  
hand ground mineral pigments with gum  
arabic on paper  
6 1/4 x 8 1/4 inches  
13 1/2 x 14 7/8 inches framed  
signed lower right  
(RR7336)



RAJA RAM SHARMA  
*Regimented*, 2015  
hand ground mineral pigments with gum  
arabic on paper  
6 1/4 x 8 1/4 inches paper  
signed lower right  
(RR7333)



RAJA RAM SHARMA  
*Held Back*, 2014  
hand ground mineral pigments with gum  
arabic on paper  
7 x 12 3/8 inches paper  
signed lower right  
(RR7319)