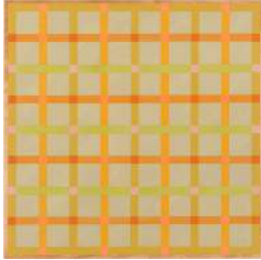


# THE DRAWING ROOM

EMILY GOLDSTEIN & VICTORIA MUNROE

## SELECTED WORKS BY GALLERY ARTISTS

February 2 - March 18, 2018



VINCENT LONGO  
*Lattice: 4 Tones*, 2006  
acrylic on wood  
16 x 16 inches  
signed and dated verso  
(VL7135)

\$4,800



VINCENT LONGO  
*Lattice: Center Dark*, 2008  
acrylic on canvas  
60 x 48 inches  
signed and dated verso  
(VL7303)

\$20,000



VINCENT LONGO  
*Lateral Lattice*, 2014  
acrylic on wood  
8 x 10 inches  
signed and dated verso  
(VL7300)

\$3,500



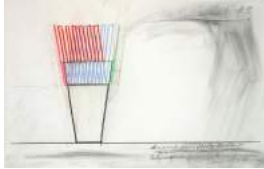
VINCENT LONGO  
*Cover*, 2006  
acrylic on wood  
9 x 12 inches  
signed and dated verso  
(VL7305)

\$3,500



VINCENT LONGO  
*Light/Sign*, 2014  
acrylic on wood  
23 3/4 x 19 3/4 inches  
signed and dated verso  
(VL7284)

\$6,000



STEPHEN ANTONAKOS  
*Neon for the Strick's #5*, Nov. 29, 1967  
graphite, colored pencil and fixative on paper  
14 x 22 inches  
16 x 24 inches framed  
signed and dated verso  
(2973)

\$4,300



STEPHEN ANTONAKOS  
*Large Neon For Coe's Show*, Nov. 23, 1967  
graphite, colored pencil and fixative on paper  
14 x 22 inches  
16 x 24 inches framed  
signed and dated lower right  
(2972)

\$4,300



STEPHEN ANTONAKOS  
*Small Standing Neon*, February 14, 1967, 1967  
graphite pencil, colored pencil and fixative on paper  
14 x 22 inches  
16 x 24 inches framed  
signed, dated and titled on front  
(SA6199)

\$4,300



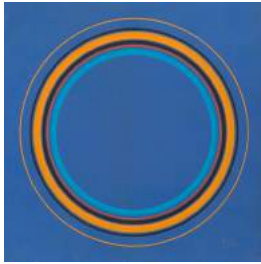
ALAN SHIELDS  
*Tower of Babal*, 2000  
watercolor on cotton pulp-dipped galvanized  
steel armature, glass beads  
47 1/2 x 22 x 22 inches  
signed, dated and titled  
(AS5009)

\$35,000



ANTONIO ASIS  
*Cercles concentriques (445-1571)*, 2008  
gouache on paperboard  
9 7/8 x 9 7/8 inches  
13 x 13 inches framed  
signed and dated lower right  
(AA7498)

\$5,500



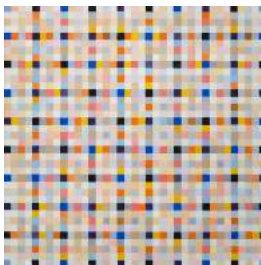
ANTONIO ASIS  
*Cercles concentriques (1109)*, 1971  
gouache on paperboard  
7 7/8 x 7 7/8 inches  
11 1/4 x 11 1/4 inches framed  
signed and dated lower right  
(AA7487)

\$5,500



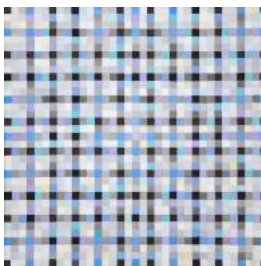
ANTONIO ASIS  
*Cercles dans Space Jaune, #3048*, 1962  
acrylic on cardboard  
20 3/4 x 20 3/4 inches  
24 x 24 inches (framed)  
signed and dated lower right  
(AA8190)

\$18,500



ANTONIO ASIS  
*Carrés rythmiques (501-245)*, 1966  
gouache on graph paper  
7 1/2 x 7 1/2 inches  
14 1/8 x 14 1/8 inches framed  
signed and dated lower right  
(AA7483)

\$7,800



ANTONIO ASIS  
*Carrés rythmiques (504-250)*, 1976  
gouache on graph paper  
7 x 6 3/4 inches  
13 1/2 x 13 1/2 inches framed  
signed and dated lower right  
(AA7484)

\$7,800



ANTONIO ASIS  
*Carrés rythmiques (2376)*, 1960  
gouache on paper  
11 3/4 x 8 1/4 inches  
14 1/2 x 14 inches framed  
signed and dated lower right  
(AA6836)

\$7,800



JACK YOUNGERMAN  
*Untitled (12)*, 1953  
oil on paper  
23 1/4 x 14 inches  
29 3/8 x 21 1/2 inches framed  
signed and dated lower right  
(JY8431)

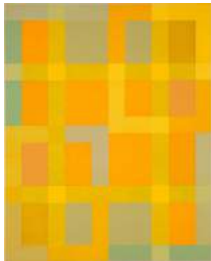
\$20,000



JACK YOUNGERMAN  
*Untitled (20)*, 1953  
oil on paper  
7 1/8 x 8 7/8 inches  
14 3/4 x 17 inches framed  
signed and dated lower right  
(JY8436)

\$8,000

office



VINCENT LONGO  
*Lattice: Yellow Light 2*, 2010  
acrylic on wood  
20 x 16 inches  
signed and dated verso  
(VL7133)

\$5,600

hallway



JACK YOUNGERMAN  
*La Combe*, 1953  
oil on paper  
7 5/8 x 7 1/2 inches  
14 1/8 x 14 inches framed  
signed and dated lower right  
(JY6340)

\$8,000

alcove



SUE HEATLEY  
*Dear One*, 2017  
acrylic and flashe on linen  
30 x 24 inches  
signed, dated and titled verso  
(SH8404)

\$4,200



MEL KENDRICK  
*Five Point Red Block*, 2012  
wood and Japan color  
13 1/4 x 6 x 6 1/2 inches  
signed on base  
(MK6487)

\$20,000



SUE HEATLEY  
*Mixed Melody*, 2017  
acrylic, flashe and ink on linen  
24 x 18 inches  
signed, dated and titled verso  
(SH8470)

\$3,600

back gallery



MEL KENDRICK  
*White Vault*, 2016  
gesso on walnut  
14 1/2 x 4 1/4 x 5 3/4 inches  
(MK8490)

\$15,000



MEL KENDRICK  
*Untitled*, 2009  
pigmented plaster  
12 1/2 x 4 3/4 x 4 3/4 inches  
signed, dated on base  
(MK8488)

\$16,000



MEL KENDRICK  
*4 Holes*, 2017  
gesso on ebonized mahogany  
42 3/4 x 28 x 3 1/2 inches  
signed, initialed and dated  
(MK8315)

\$35,000



MEL KENDRICK  
*Web, Mahogany*, 1990  
woodprint on Sekishu paper  
24 1/2 x 18 7/8 inches  
26 3/4 x 21 inches framed  
Ed. 28/30  
signed and dated lower right  
numbered lower left  
(MK8304.28)

\$4,000



MEL KENDRICK  
*Raised Oak*, 1990  
woodprint on Sekishu paper  
24 1/2 x 18 7/8 inches  
Edition of 30, V/X  
signed and dated lower right  
numbered lower left  
(MK8320)

\$4,000

lower level



SUE HEATLEY  
*Reaching Peachy*, 2017  
monotype, gouache, ink, collage on Kitakata  
paper  
14 x 11 1/2 inches  
19 3/4 x 16 1/2 inches framed  
titled, signed, dated lower right  
(SH8496)

\$1,800



SUE HEATLEY  
*Ruby Jangle*, 2017  
monotype, gouache, ink, collage on Kitakata  
paper  
14 x 11 1/2 inches  
19 3/4 x 16 1/2 inches framed  
titled, signed, dated lower right  
(SH8498)

\$1,800



SUE HEATLEY  
*Limerick Pool*, 2017  
monotype, gouache, ink, collage on Kitakata  
paper  
14 x 11 1/2 inches  
19 3/4 x 16 1/2 inches framed  
titled, signed, dated lower right  
(SH8494)

\$1,800



SUE HEATLEY  
*Milky Lava Moon*, 2017  
monotype, gouache, Tyvek, collage on Kitakata  
paper  
14 x 11 1/2 inches  
19 3/4 x 16 1/2 inches framed  
titled, signed, dated lower right  
(SH8495)

\$1,800



MARY ELLEN BARTLEY  
*Grey Gardens Stack 1 (Reading Grey Gardens)*,  
2017  
archival pigment print  
18 3/4 x 15 inches (image)  
20 3/4 x 17 inches (sheet)  
Edition of 7  
(MB8413)

\$2,400



MARY ELLEN BARTLEY  
*Edith Beale's Elementary Latin (Reading Grey  
Gardens)*, 2017  
archival pigment print  
18 3/4 x 15 inches (image)  
20 3/4 x 17 inches (sheet)  
Ed. 1/7  
(MB8420.1)

\$2,700



MARY ELLEN BARTLEY  
*Green Spread Cover (Reading Grey Gardens)*,  
2017  
archival pigment print  
15 x 18 3/4 inches (image)  
17 x 20 3/4 inches (sheet)  
Edition of 7  
(MB8419)

\$2,400



MARY ELLEN BARTLEY  
*Cats (Reading Grey Gardens)*, 2017  
archival pigment print  
18 3/4 x 15 inches (image)  
20 3/4 x 17 inches (sheet)  
Edition of 7  
(MB8327)



MARY ELLEN BARTLEY  
*Two of Them (Reading Grey Gardens)*, 2017  
archival pigment print  
15 x 18 3/4 inches image  
17x 20 3/4 inches sheet  
Edition of 7  
(MB8396)

\$2,400



MARY ELLEN BARTLEY  
*Information Please (Reading Grey Gardens)*,  
2017  
archival pigment print  
18 3/4 x 15 inches (image)  
20 3/4 x 17 inches (sheet)  
Edition of 7  
(MB8416)

\$2,400



LAURIE LAMBRECHT  
*Crying Girl, B&W*, 1991  
archival pigment print  
44 x 44 inches  
45 x 45 inches framed  
Ed. 2/6  
signed, named & dated verso  
(LL8119.2)

\$7,500



LAURIE LAMBRECHT  
*Crying Girls, Reflections*, 1990  
archival pigment print  
24 x 24 inches (sheet)  
24 7/8 x 25 1/8 inches framed  
Ed. 4/12  
signed, dated and numbered verso  
(LL8123.4)

\$5,000





LAURIE LAMBRECHT  
*Explosions, SLAM*, 1990  
archival pigment print  
24 x 24 inches  
25 x 25 inches framed  
Ed. 6/12  
(LL8184.6)

\$6,000



LAURIE LAMBRECHT  
*Naples*, 1990  
archival pigment print  
24 x 24 inches (sheet)  
Ed. 3/12  
(LL8312.3)

\$5,000



MARY ELLEN BARTLEY  
*Yellow Cloth Cover (Reading Grey Gardens)*,  
2017  
archival pigment print  
18 3/4 x 15 inches (image)  
20 3/4 x 17 inches (sheet)  
Ed. 1/7  
signed, dated and numbered on label verso  
(MB8505.1)

\$2,400



MARY ELLEN BARTLEY  
*Grey Cloth Cover (Reading Grey Gardens)*,  
2017  
archival pigment print  
18 3/4 x 15 inches (image)  
20 3/4 x 17 inches (sheet)  
Ed. 1/7  
signed, dated and numbered on label verso  
(MB8501.1)

\$2,400



MARY ELLEN BARTLEY  
*Blue Cloth Cover (Reading Grey Gardens)*, 2017  
archival pigment print  
18 3/4 x 15 inches (image)  
20 3/4 x 17 inches (sheet)  
Ed. 6/7  
signed, dated and numbered on label verso  
(MB8500.6)

\$3,000



MARY ELLEN BARTLEY  
*Look Younger, Live Longer (Reading Grey Gardens)*, 2017  
archival pigment print  
18 3/4 x 15 inches (image)  
20 3/4 x 17 inches (sheet)  
Ed. 2/7  
signed, dated and numbered on label verso  
(MB8502.2)

\$2,400



MARY ELLEN BARTLEY  
*Shandygaff (Reading Grey Gardens)*, 2017  
archival pigment print  
18 3/4 x 15 inches (image)  
20 3/4 x 17 inches (sheet)  
Edition of 7  
(MB8373)

\$2,400



MARY ELLEN BARTLEY  
*Mutiny on the Bounty (Reading Grey Gardens)*, 2017  
archival pigment print  
18 3/4 x 15 inches (image)  
20 3/4 x 17 inches (sheet)  
Ed. 2/7  
(MB8451.2)

\$3,000



AYA MIYATAKE  
*Taira*, 2017  
alabaster  
6 1/2 x 16 x 10 inches  
(AM8269)

\$8,000



AYA MIYATAKE  
*Me*, 2016  
alabaster  
6 x 16 x 8 inches  
(AM8298)

\$8,000



DAN RIZZIE  
*Nizamuddin*, 2015  
lithograph, relief, collage, chine collé  
38 x 30 inches  
41 x 32 3/8 inches framed  
Ed. 29/30  
numbered lower left; signed, dated lower right  
(DR7555.29)

\$3,800



DAN RIZZIE  
*Italian Letter*, 2016  
mixed media, collage  
24 x 19 1/8 inches  
26 1/4 x 21 1/4 inches framed  
unique  
initialed, dated lower right  
(DR8212)

\$4,000



DAN RIZZIE  
*Little Tantric Bird*, 2015  
relief, collage, chine collé, digital print  
17 x 14 inches  
19 3/4 x 16 1/8 inches framed  
Ed. 29/30  
numbered lower left; initialed, dated lower right  
(DR7570.29)

\$1,400



DAN RIZZIE  
*Do Hop Robin with Circles*, 2016  
mixed media, collage  
19 7/8 x 17 inches  
22 x 19 1/4 inches framed  
unique  
initialed, dated lower right  
(DR8214)

\$3,500